

SCENECA
景乐苑 RESIDENCE

SITE PLAN



SITE PLAN



LEVEL 3

ARRIVAL FOYER

- 15 Garden Gate - 1
- 16 Garden Gate - 2
- 17 Passenger Lift (2nd to 3rd Level)
- 18 Exit

BOTANY FIELD

- 19 Lantern Walkway
- 20 Green Walkway
- 21 Iris Garden Path
- 22 Iris Garden Trail
- 23 Fern Courtyard
- 24 Aqua Walk

- 25 Aroma Lane
- 26 Cascading Aqua Terrace
- 27 Swing Garden
- 28 The Lawn
- 29 Courtyard Stairway
- 30 Tree Courtyard

WELLNESS SCENE

- 31 50m Lap Pool
- 32 Lap Pool Shower Point
- 33 Gym Room
- 34 Toilet with Shower (M)
- 35 Toilet with Shower (F)
- 36 Handicap-accessible Toilet

RECREATION OASIS

- 37 Family Lounge
- 38 Sun Deck
- 39 Clubhouse
- 40 Splash Pool
- 41 Splash Deck
- 42 Splash Pool Water Feature

- 43 Splash Pool Shower Point
- 44 Playground
- 45 Function Room
- 46 Party Pavilion
- 47 Festive Pavilion

ROOF LEVEL

- 48 Domestic Water Tank

Please note that the rendering of the units as shown are for illustrative purpose only. The boundary lines of the units set out herein are accordingly not to be taken as factual representation of the boundary lines of the actual units.

UNIT DISTRIBUTION CHART



| 26 Tanah Merah Kechil Link S(468457) | | | | | | | | | | | | | |
|--------------------------------------|---------------------------------|------------|------|------|------|--|---------------|---------------------------------|-------|------|-------|------------|-------|
| UNIT LEVEL | 1 | 2 | 3 | 4 | 5 | | UNIT LEVEL | 6 | 7 | 8 | 9 | 10 | 11 |
| 15 | C3-E | PH2 #15-02 | | C1-E | B1-E | | 15 | B3S-E | B2S-E | A1-E | C4a-E | PH1 #15-10 | |
| 14 | C3 | C2 | C4 | C1 | B1 | | 14 | B3S | B2S | A1 | C4a | D1 | A2S |
| 13 | C3 | C2 | C4 | C1 | B1 | | 13 | B3S | B2S | A1 | C4a | D1 | A2S |
| 12 | C3 | C2 | C4 | C1 | B1 | | 12 | B3S | B2S | A1 | C4a | D1 | A2S |
| 11 | C3 | C2 | C4 | C1 | B1 | | 11 | B3S | B2S | A1 | C4a | D1 | A2S |
| 10 | C3 | C2 | C4 | C1 | B1 | | 10 | B3S | B2S | A1 | C4a | D1 | A2S |
| 9 | C3 | C2 | C4 | C1 | B1 | | 9 | B3S | B2S | A1 | C4a | D1 | A2S |
| 8 | C3 | C2 | C4 | C1 | B1 | | 8 | B3S | B2S | A1 | C4a | D1 | A2S |
| 7 | C3 | C2 | C4 | C1 | B1 | | 7 | B3S | B2S | A1 | C4a | D1 | A2S |
| 6 | C3 | C2 | C4 | C1 | B1 | | 6 | B3S | B2S | A1 | C4a | D1 | A2S |
| 5 | C3 | C2 | C4 | C1 | B1 | | 5 | B3S | B2S | A1 | C4a | D1 | A2S |
| 4 | C3 | C2 | C4 | C1 | B1 | | 4 | B3S | B2S | A1 | C4a | D1 | A2S |
| 3 | C3-P | C2-P | C4-P | C1-P | B1-P | | 3 | B3S-P | B2S-P | A1-G | C4a-P | D1-P | A2S-G |
| 2 | RESIDENTIAL CAR PARK | | | | | | 2 | RESIDENTIAL CAR PARK | | | | | |
| 1 | COMMERCIAL/RESIDENTIAL CAR PARK | | | | | | 1 | COMMERCIAL/RESIDENTIAL CAR PARK | | | | | |

| 28 Tanah Merah Kechil Link S(468458) | | | | | | | | | | | | | |
|--------------------------------------|---------------------------------|------|-------|-------|-------|--|---------------|---------------------------------|--------|------|------------|------|------|
| UNIT LEVEL | 12 | 13 | 14 | 15 | 16 | | UNIT LEVEL | 17 | 18 | 19 | 20 | 21 | 22 |
| 14 | PH1 #14-12 | | C1a-E | A1a-E | B1a-E | | 14 | B3S-E | B2Sa-E | C1-E | PH2 #14-20 | | C3-E |
| 13 | A2S | D1 | C1a | A1a | B1a | | 13 | B3S | B2Sa | C1 | C4 | C2 | C3 |
| 12 | A2S | D1 | C1a | A1a | B1a | | 12 | B3S | B2Sa | C1 | C4 | C2 | C3 |
| 11 | A2S | D1 | C1a | A1a | B1a | | 11 | B3S | B2Sa | C1 | C4 | C2 | C3 |
| 10 | A2S | D1 | C1a | A1a | B1a | | 10 | B3S | B2Sa | C1 | C4 | C2 | C3 |
| 9 | A2S | D1 | C1a | A1a | B1a | | 9 | B3S | B2Sa | C1 | C4 | C2 | C3 |
| 8 | A2S | D1 | C1a | A1a | B1a | | 8 | B3S | B2Sa | C1 | C4 | C2 | C3 |
| 7 | A2S | D1 | C1a | A1a | B1a | | 7 | B3S | B2Sa | C1 | C4 | C2 | C3 |
| 6 | A2S | D1 | C1a | A1a | B1a | | 6 | B3S | B2Sa | C1 | C4 | C2 | C3 |
| 5 | A2S | D1 | C1a | A1a | B1a | | 5 | | B2Sa | C1 | C4 | C2 | C3 |
| 4 | A2S | D1 | C1a | A1a | B1a | | 4 | | B2Sa | C1 | C4 | C2 | C3 |
| 3 | A2S-G | D1-P | C1a-P | A1a-G | B1a-P | | 3 | | B2Sa-P | C1-P | C4-P | C2-P | C3-P |
| 2 | RESIDENTIAL CAR PARK | | | | | | 2 | RESIDENTIAL CAR PARK | | | | | |
| 1 | COMMERCIAL/RESIDENTIAL CAR PARK | | | | | | 1 | COMMERCIAL/RESIDENTIAL CAR PARK | | | | | |

| | | | |
|----------|-------------------|----------|-------------------|
| TYPE A1 | 1-Bedroom | TYPE B2S | 2-Bedroom + Study |
| TYPE A2S | 1-Bedroom + Study | TYPE B3S | 2-Bedroom + Study |
| TYPE B1 | 2-Bedroom | TYPE C1 | 3-Bedroom Classic |

| | | | |
|---------|-------------------|----------|---------------------|
| TYPE C2 | 3-Bedroom Deluxe | TYPE D1 | 4-Bedroom Luxury |
| TYPE C3 | 3-Bedroom Grande | TYPE PH1 | 4-Bedroom Penthouse |
| TYPE C4 | 3-Bedroom Premium | TYPE PH2 | 4-Bedroom Penthouse |

THE IDEAL PLACE FOR YOUR PERSONAL SPACE AND HOME OFFICE

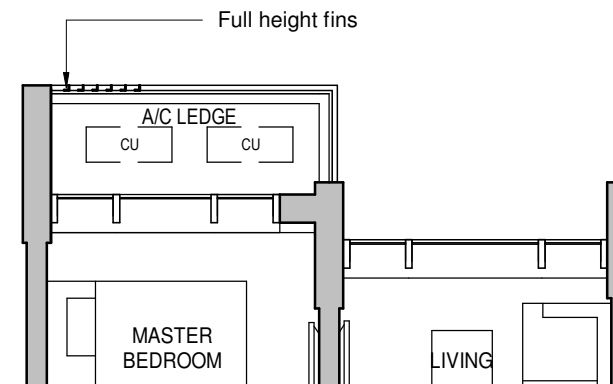


1-BEDROOM

TYPE A1-G

463 sqft / 43 sqm

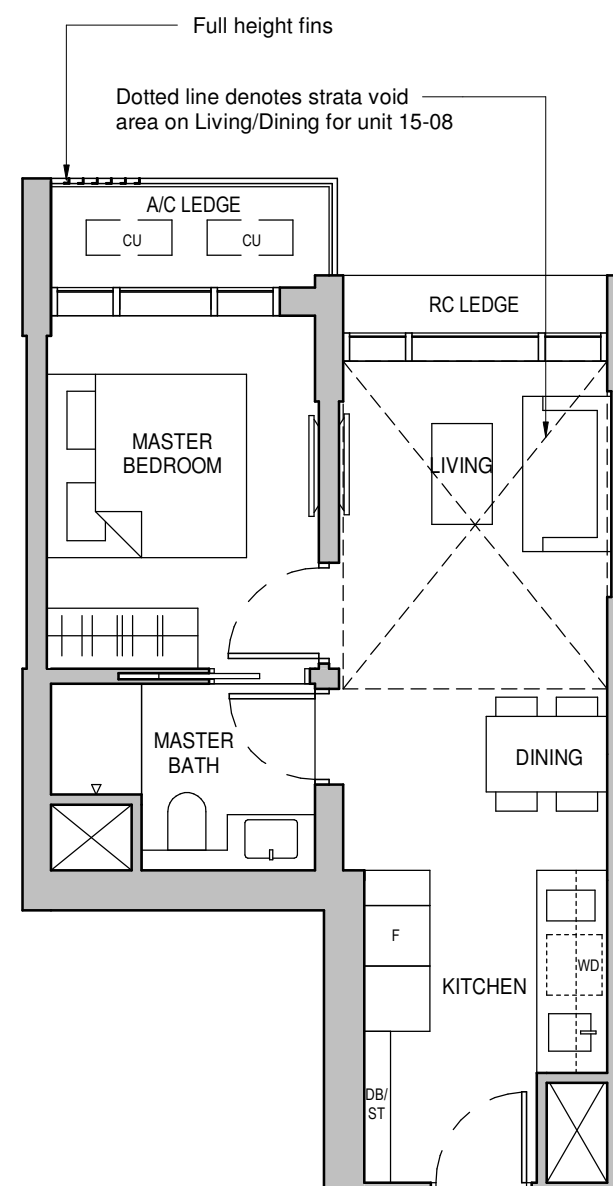
Tower 26
03-08



TYPE A1

463 sqft / 43 sqm

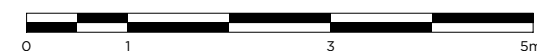
Tower 26
04-08 to 14-08



TYPE A1-E

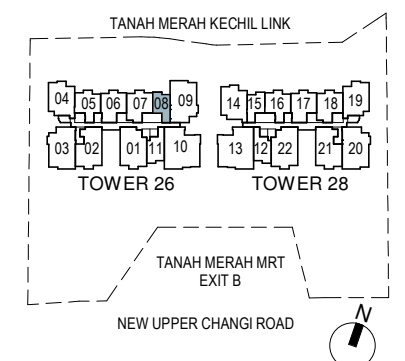
570 sqft / 53 sqm
(inclusive of 10 sqm Strata void area)

Tower 26
15-08



LEGEND

- | | |
|--|-------------------------|
| AC LEDGE - Air Conditioner Ledge | F - Refridgerator |
| CU - Condensing Unit | DB - Distribution Board |
| HS - Household Shelter | ST - Storage |
| WD - Washer cum Dryer | * - Mirrored Unit |
| RC LEDGE - Reinforced concrete ledge (excluded from strata area) | |
| ☒ Service Void Areas (exclude from strata area) | |



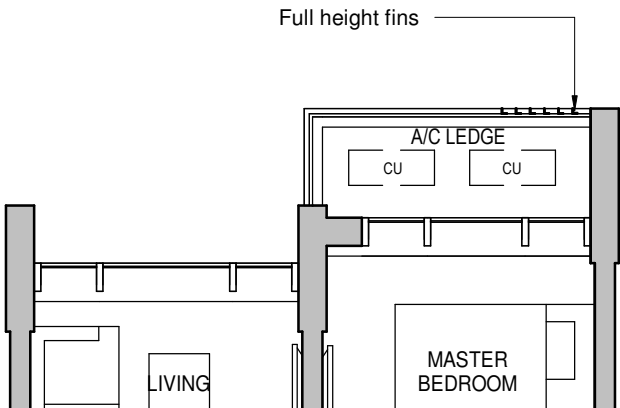
Area includes A/C ledge, balconies, private enclosed space and void (where applicable). Areas are estimated only and are subject to final survey. Plans are not to scale and subject to changes as may be required by the relevant authorities. The balconies shall not be enclosed unless with approved screen. For an illustration of the approved screen, please refer to the annex of balcony screen side letter.

1-BEDROOM

TYPE A1A-G

463 sqft / 43 sqm

Tower 28
03-15



TYPE A1A

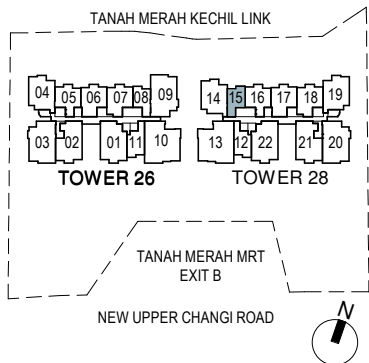
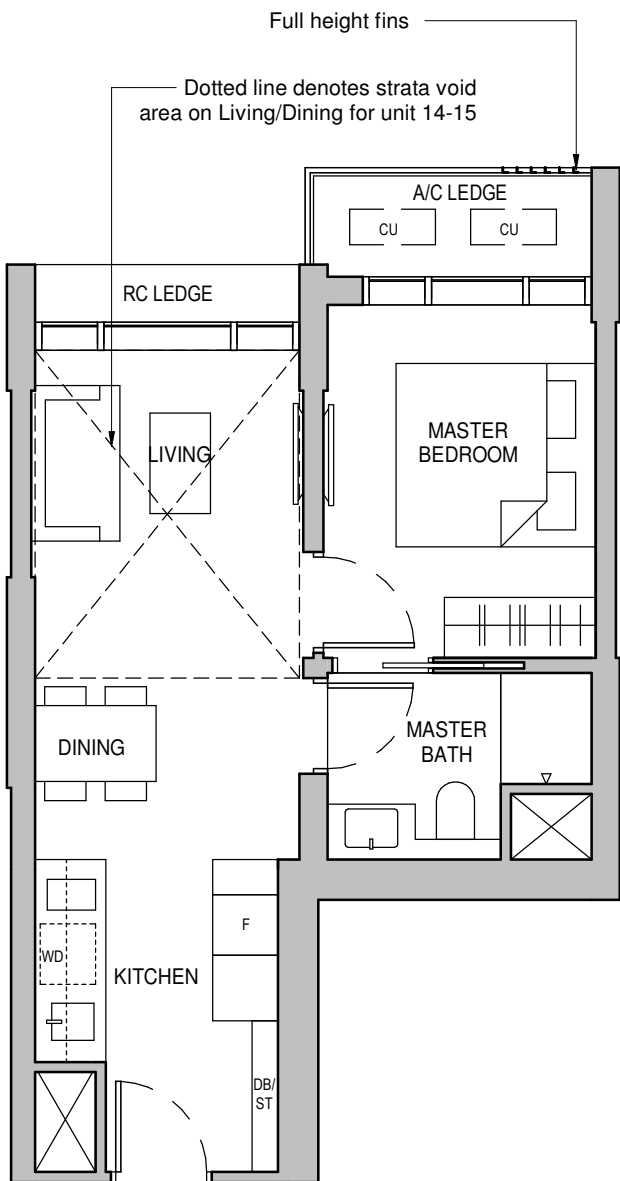
463 sqft / 43 sqm

Tower 28
04-15 to 13-15

TYPE A1A-E

570 sqft / 53 sqm
(inclusive of 10 sqm Strata void area)

Tower 28
14-15



- LEGEND**
- | | |
|--|-------------------------|
| AC LEDGE - Air Conditioner Ledge | F - Refrigerator |
| CU - Condensing Unit | DB - Distribution Board |
| HS - Household Shelter | ST - Storage |
| WD - Washer cum Dryer | * - Mirrored Unit |
| RC LEDGE - Reinforced concrete ledge (excluded from strata area) | |
| Service Void Areas (exclude from strata area) | |

Area includes A/C ledge, balconies, private enclosed space and void (where applicable). Areas are estimated only and are subject to final survey. Plans are not to scale and subject to changes as may be required by the relevant authorities. The balconies shall not be enclosed unless with approved screen. For an illustration of the approved screen, please refer to the annex of balcony screen side letter.

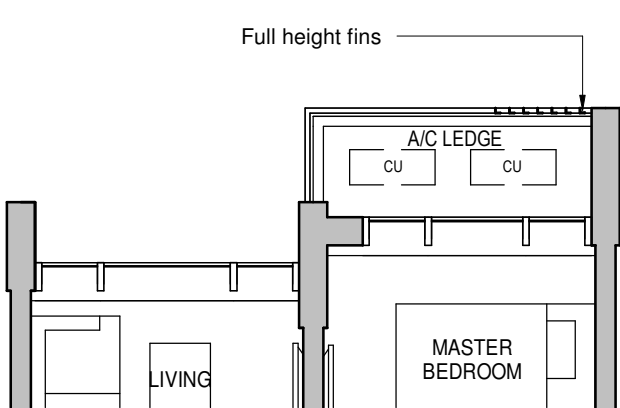
1-BEDROOM + STUDY

TYPE A2S-G

538 sqft / 50 sqm

Tower 26
03-11

Tower 28
03-12*

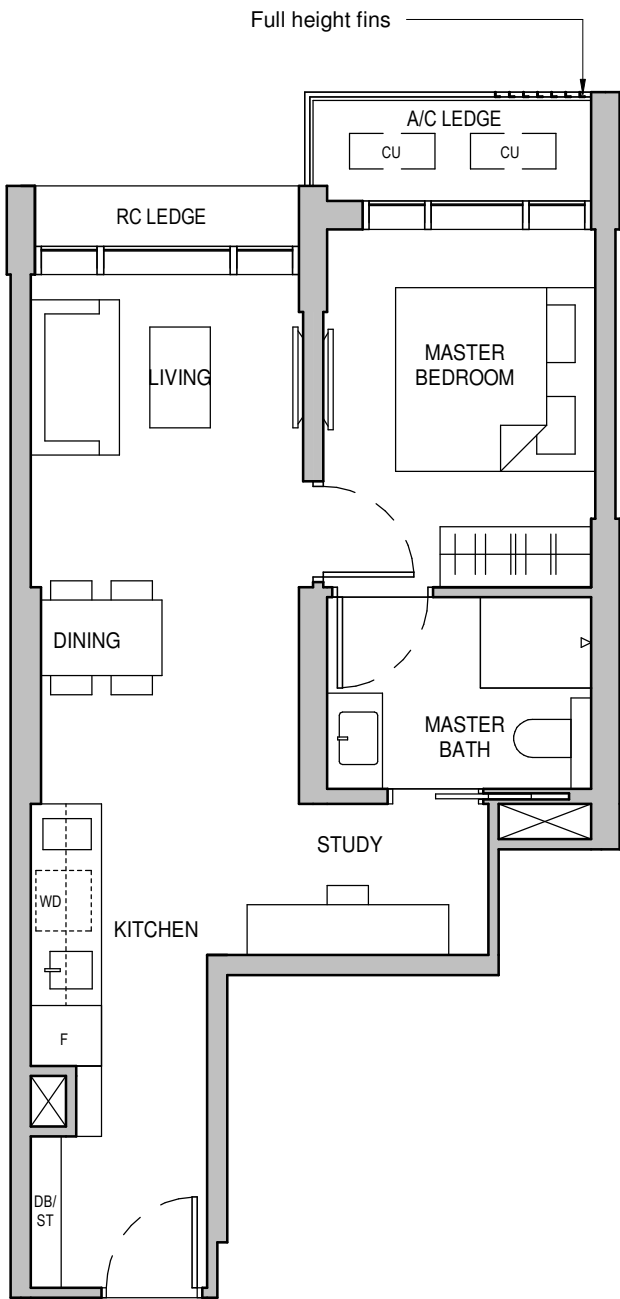


TYPE A2S

538 sqft / 50 sqm

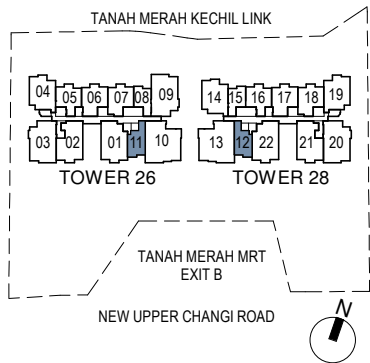
Tower 26
04-11 to 14-11

Tower 28
04-12* to 13-12*



- LEGEND**
- | | |
|--|-------------------------|
| AC LEDGE - Air Conditioner Ledge | F - Refrigerator |
| CU - Condensing Unit | DB - Distribution Board |
| HS - Household Shelter | ST - Storage |
| WD - Washer cum Dryer | * - Mirrored Unit |
| RC LEDGE - Reinforced concrete ledge (excluded from strata area) | |
| Service Void Areas (exclude from strata area) | |

Area includes A/C ledge, balconies, private enclosed space and void (where applicable). Areas are estimated only and are subject to final survey. Plans are not to scale and subject to changes as may be required by the relevant authorities. The balconies shall not be enclosed unless with approved screen. For an illustration of the approved screen, please refer to the annex of balcony screen side letter.



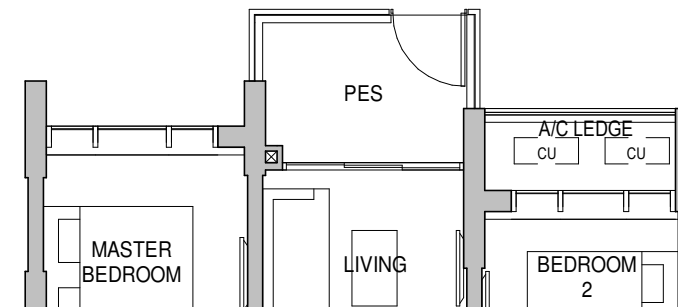
THE PERFECT HOME FOR THE PERFECT COUPLE



2-BEDROOM

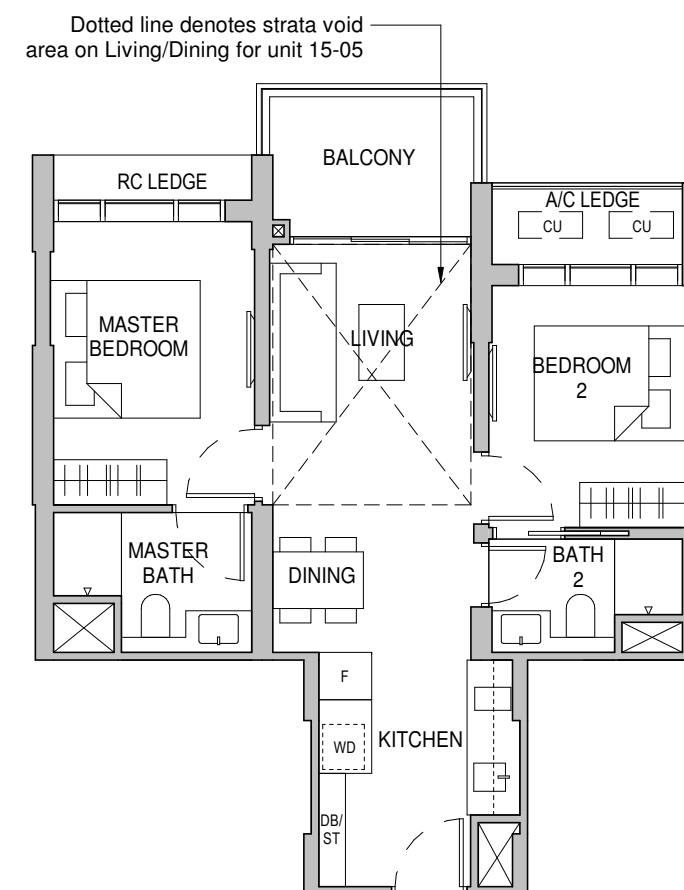
TYPE B1-P 678 sqft / 63 sqm

Tower 26
03-05



TYPE B1 678 sqft / 63 sqm

Tower 26
04-05 to 14-05



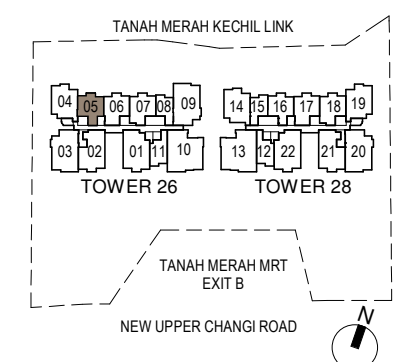
TYPE B1-E 786 sqft / 73 sqm (inclusive of 10 sqm Strata void area)

Tower 26
15-05



LEGEND

- | | |
|--|-------------------------|
| AC LEDGE - Air Conditioner Ledge | F - Refridgerator |
| CU - Condensing Unit | DB - Distribution Board |
| HS - Household Shelter | ST - Storage |
| WD - Washer cum Dryer | * - Mirrored Unit |
| RC LEDGE - Reinforced concrete ledge (excluded from strata area) | |
| ☒ Service Void Areas (exclude from strata area) | |



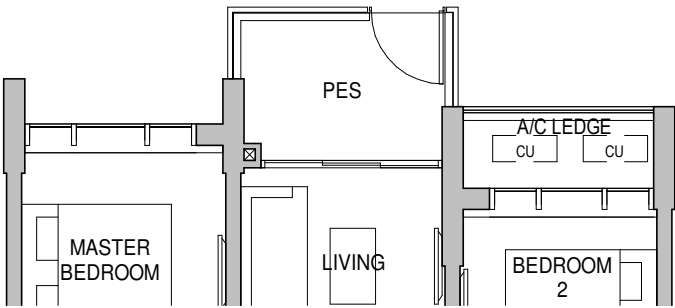
Area includes A/C ledge, balconies, private enclosed space and void (where applicable). Areas are estimated only and are subject to final survey. Plans are not to scale and subject to changes as may be required by the relevant authorities. The balconies shall not be enclosed unless with approved screen. For an illustration of the approved screen, please refer to the annex of balcony screen side letter.

2-BEDROOM

TYPE B1A-P

689 sqft / 64 sqm

Tower 28
03-16



TYPE B1A

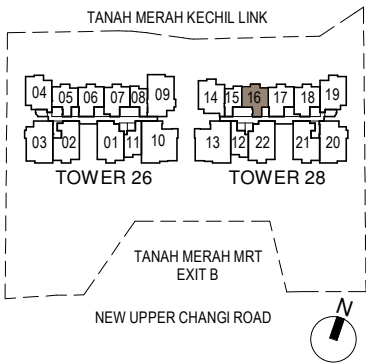
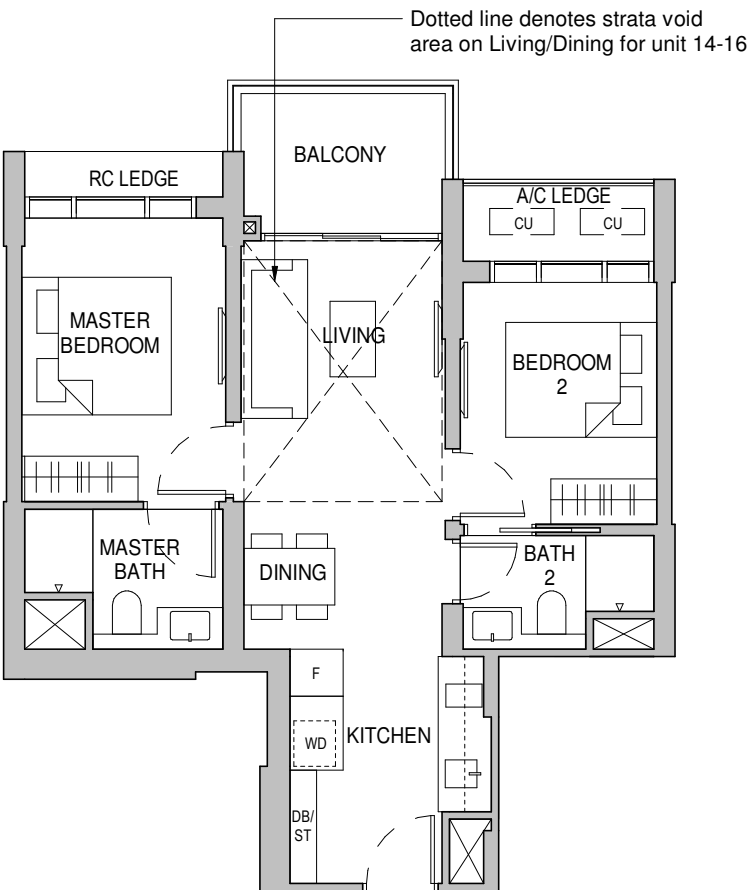
689 sqft / 64 sqm

Tower 28
04-16 to 13-16

TYPE B1A-E

797 sqft / 74 sqm
(inclusive of 10 sqm Strata void area)

Tower 28
14-16



- LEGEND**
- AC LEDGE - Air Conditioner Ledge
 - CU - Condensing Unit
 - HS - Household Shelter
 - WD - Washer cum Dryer
 - RC LEDGE - Reinforced concrete ledge (excluded from strata area)
 - Service Void Areas (exclude from strata area)
 - F - Refridgerator
 - DB - Distribution Board
 - ST - Storage
 - * - Mirrored Unit

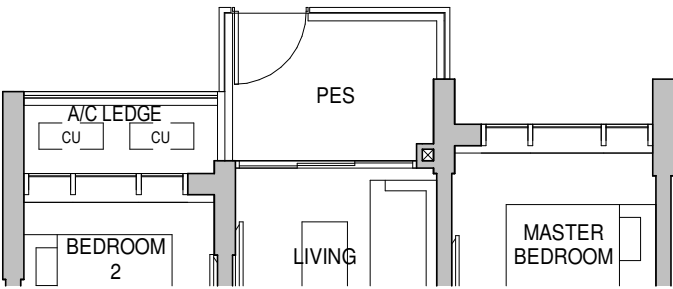
Area includes A/C ledge, balconies, private enclosed space and void (where applicable). Areas are estimated only and are subject to final survey. Plans are not to scale and subject to changes as may be required by the relevant authorities. The balconies shall not be enclosed unless with approved screen. For an illustration of the approved screen, please refer to the annex of balcony screen side letter.

2-BEDROOM + STUDY

TYPE B2S-P

753 sqft / 70 sqm

Tower 26
03-07



TYPE B2S

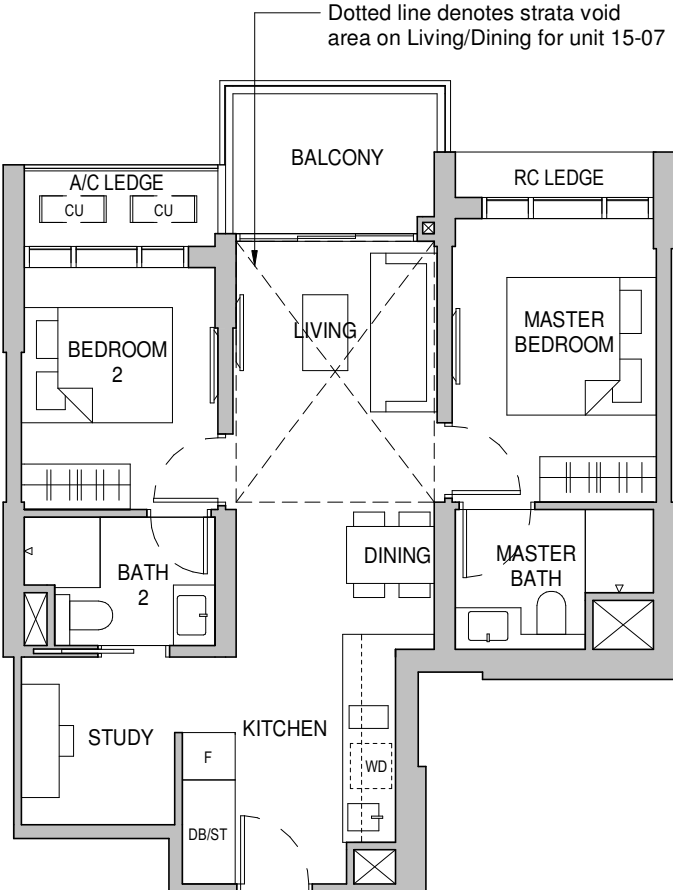
753 sqft / 70 sqm

Tower 26
04-07 to 14-07

TYPE B2S-E

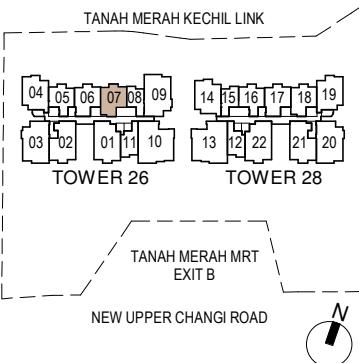
861 sqft / 80 sqm
(inclusive of 10 sqm Strata void area)

Tower 26
15-07



- LEGEND**
- AC LEDGE - Air Conditioner Ledge
 - CU - Condensing Unit
 - HS - Household Shelter
 - WD - Washer cum Dryer
 - RC LEDGE - Reinforced concrete ledge (excluded from strata area)
 - Service Void Areas (exclude from strata area)
 - F - Refridgerator
 - DB - Distribution Board
 - ST - Storage
 - * - Mirrored Unit

Area includes A/C ledge, balconies, private enclosed space and void (where applicable). Areas are estimated only and are subject to final survey. Plans are not to scale and subject to changes as may be required by the relevant authorities. The balconies shall not be enclosed unless with approved screen. For an illustration of the approved screen, please refer to the annex of balcony screen side letter.

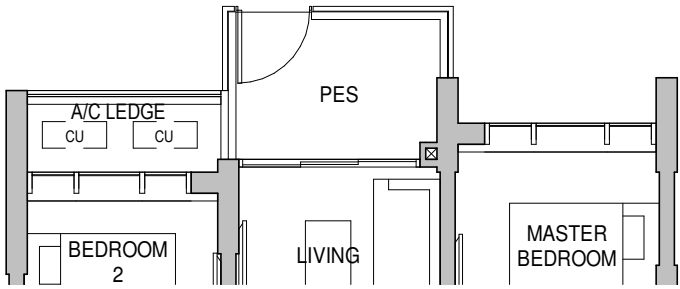


2-BEDROOM + STUDY

TYPE B2SA-P

753 sqft / 70 sqm

Tower 28
03-18



TYPE B2SA

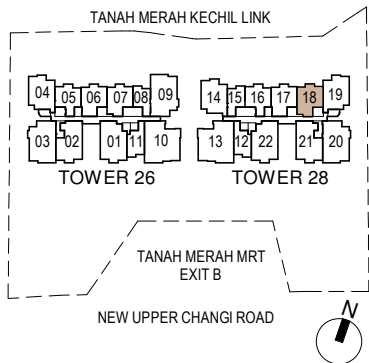
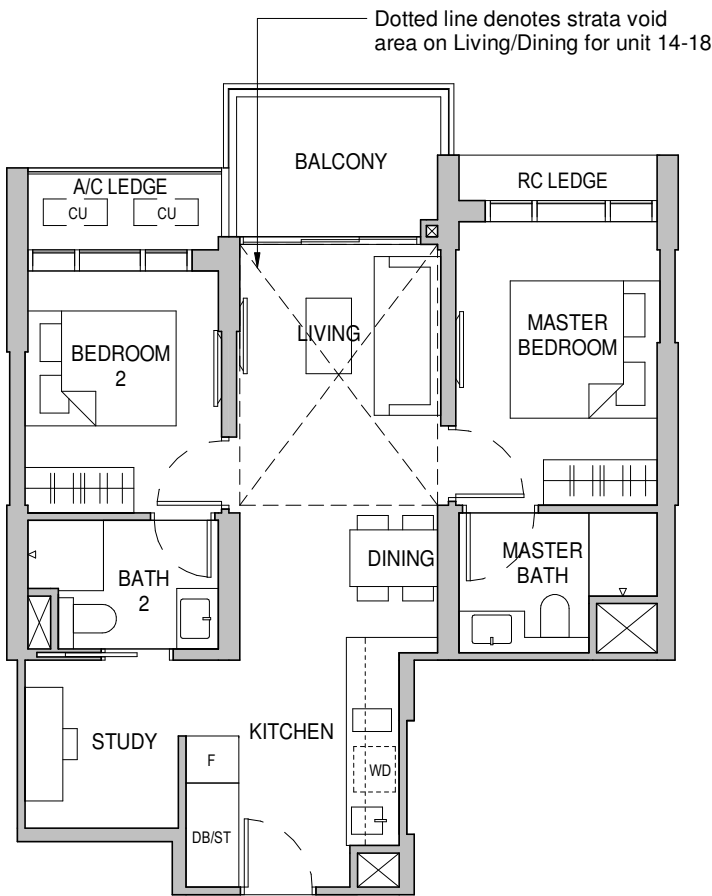
753 sqft / 70 sqm

Tower 28
04-18 to 13-18

TYPE B2SA-E

861 sqft / 80 sqm
(inclusive of 10 sqm Strata void area)

Tower 28
14-18



- LEGEND**
- AC LEDGE - Air Conditioner Ledge
 - CU - Condensing Unit
 - HS - Household Shelter
 - WD - Washer cum Dryer
 - RC LEDGE - Reinforced concrete ledge (excluded from strata area)
 - Service Void Areas (exclude from strata area)
 - F - Refridgerator
 - DB - Distribution Board
 - ST - Storage
 - * - Mirrored Unit

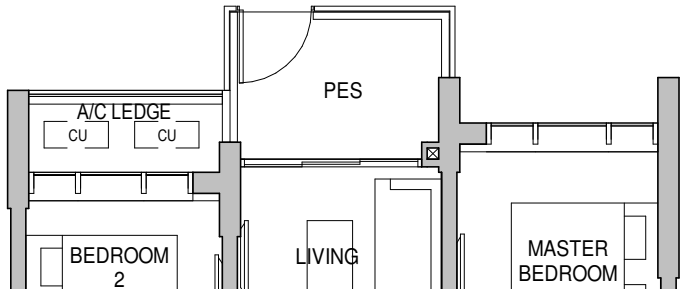
Area includes A/C ledge, balconies, private enclosed space and void (where applicable). Areas are estimated only and are subject to final survey. Plans are not to scale and subject to changes as may be required by the relevant authorities. The balconies shall not be enclosed unless with approved screen. For an illustration of the approved screen, please refer to the annex of balcony screen side letter.

2-BEDROOM + STUDY

TYPE B3S-P

764 sqft / 71 sqm

Tower 26
03-06



TYPE B3S

764 sqft / 71 sqm

Tower 26
04-06 to 14-06

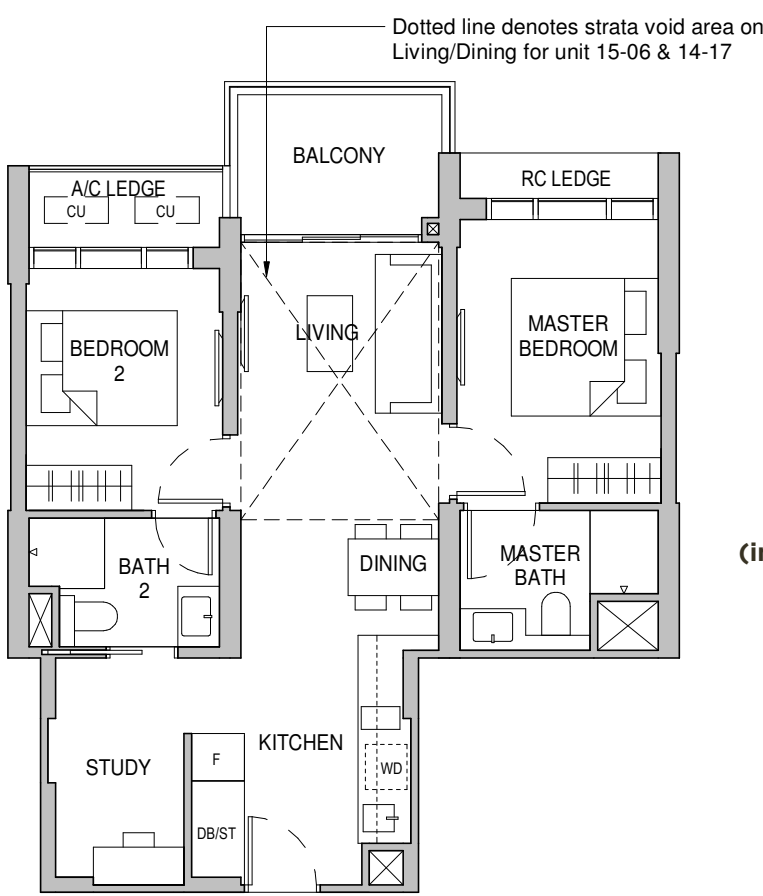
Tower 28
06-17 to 13-17

TYPE B3S-E

883 sqft / 82 sqm
(inclusive of 11 sqm Strata void area)

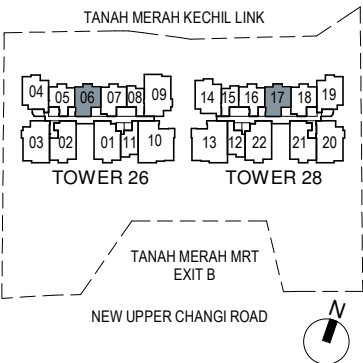
Tower 26
15-06

Tower 28
14-17



- LEGEND**
- AC LEDGE - Air Conditioner Ledge
 - CU - Condensing Unit
 - HS - Household Shelter
 - WD - Washer cum Dryer
 - RC LEDGE - Reinforced concrete ledge (excluded from strata area)
 - Service Void Areas (exclude from strata area)
 - F - Refridgerator
 - DB - Distribution Board
 - ST - Storage
 - * - Mirrored Unit

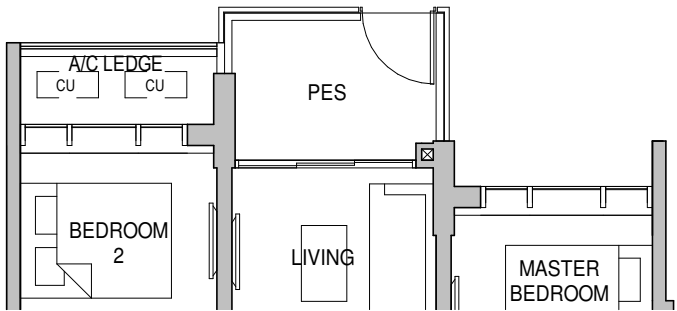
Area includes A/C ledge, balconies, private enclosed space and void (where applicable). Areas are estimated only and are subject to final survey. Plans are not to scale and subject to changes as may be required by the relevant authorities. The balconies shall not be enclosed unless with approved screen. For an illustration of the approved screen, please refer to the annex of balcony screen side letter.



A CLASSIC LAYOUT THAT IS JUST RIGHT FOR A SMALL HOUSEHOLD



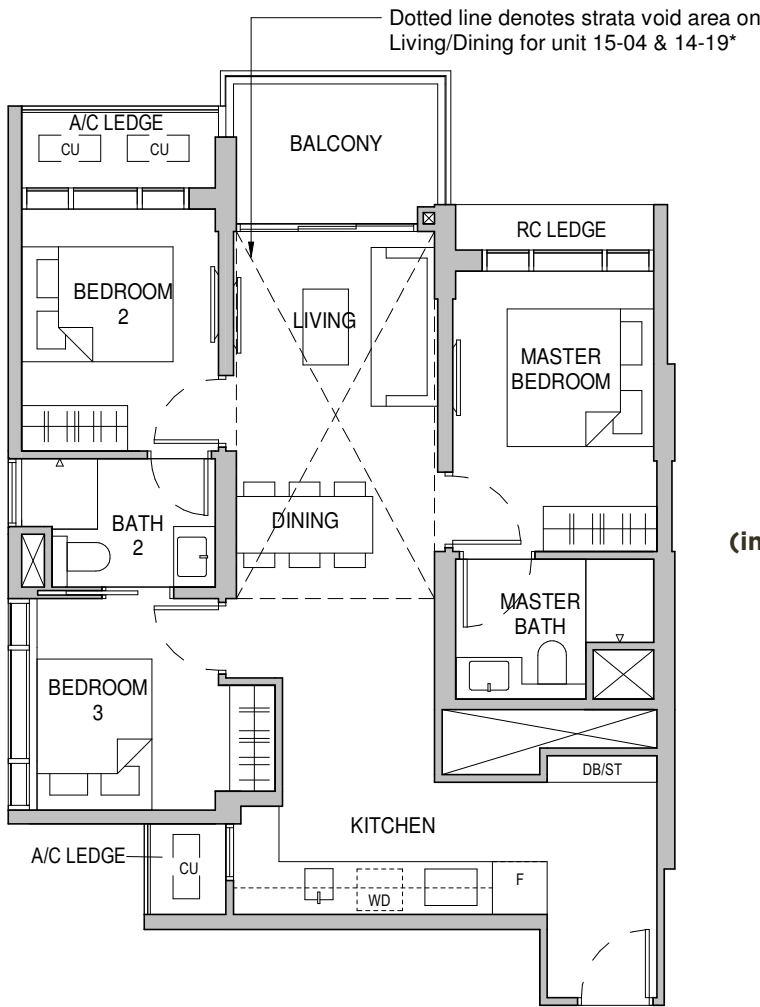
3-BEDROOM CLASSIC



TYPE C1-P
904 sqft / 84 sqm

Tower 26
03-04

Tower 28
03-19*



TYPE C1
904 sqft / 84 sqm

Tower 26
04-04 to 14-04

Tower 28
04-19* to 13-19*

TYPE C1-E
1055 sqft / 98 sqm
(inclusive of 14 sqm Strata void area)

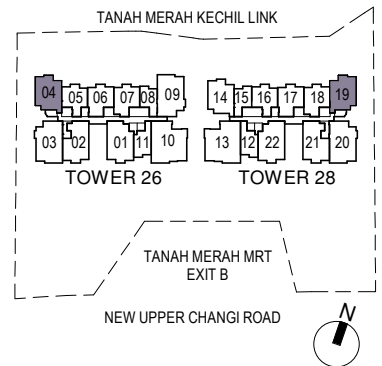
Tower 26
15-04

Tower 28
14-19*



LEGEND

- AC LEDGE - Air Conditioner Ledge
- CU - Condensing Unit
- HS - Household Shelter
- WD - Washer cum Dryer
- RC LEDGE - Reinforced concrete ledge (excluded from strata area)
- Service Void Areas (exclude from strata area)
- F - Refrigerator
- DB - Distribution Board
- ST - Storage
- * - Mirrored Unit



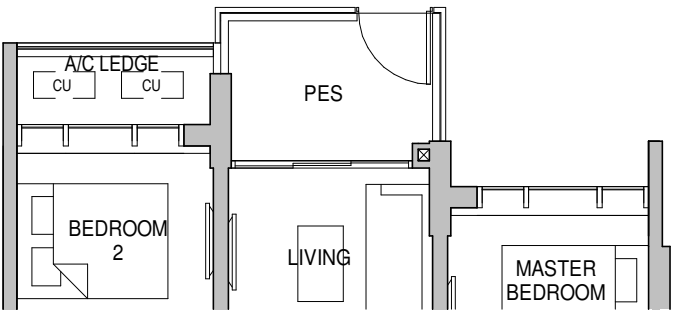
Area includes A/C ledge, balconies, private enclosed space and void (where applicable). Areas are estimated only and are subject to final survey. Plans are not to scale and subject to changes as may be required by the relevant authorities. The balconies shall not be enclosed unless with approved screen. For an illustration of the approved screen, please refer to the annex of balcony screen side letter.

3-BEDROOM CLASSIC

TYPE C1A-P

904 sqft / 84 sqm

Tower 28
03-14



TYPE C1A

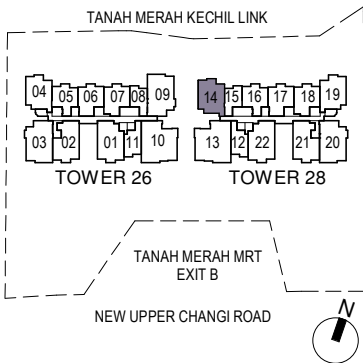
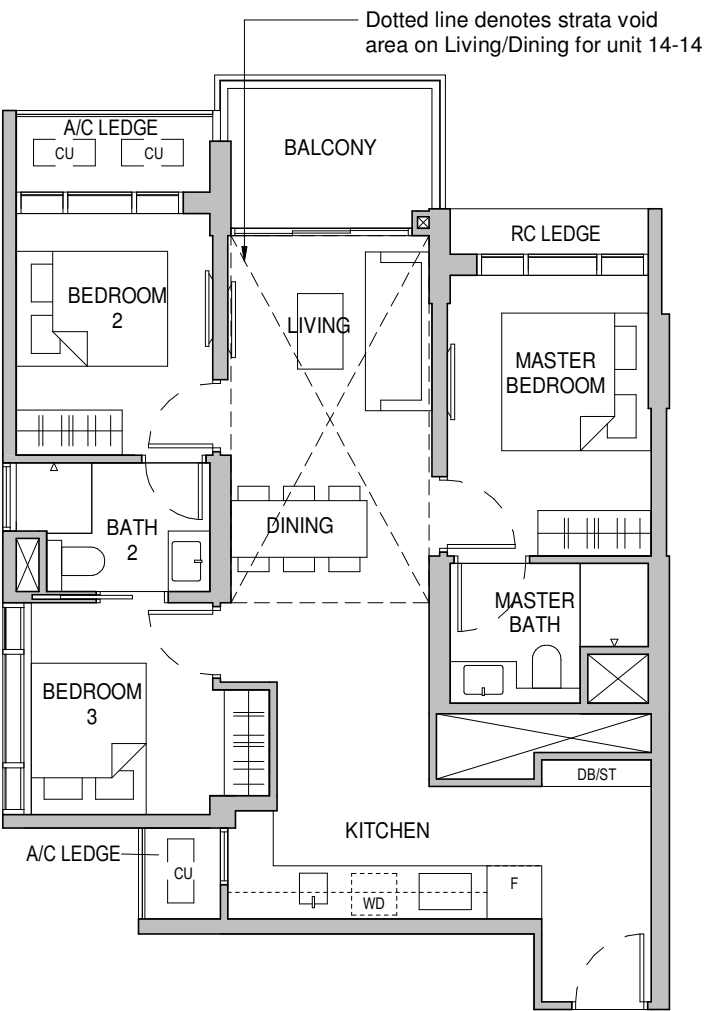
904 sqft / 84 sqm

Tower 28
04-14 to 13-14

TYPE C1A-E

1055 sqft / 98 sqm
(inclusive of 14 sqm Strata void area)

Tower 28
14-14



- LEGEND**
- AC LEDGE - Air Conditioner Ledge
 - CU - Condensing Unit
 - HS - Household Shelter
 - WD - Washer cum Dryer
 - RC LEDGE - Reinforced concrete ledge (excluded from strata area)
 - Service Void Areas (exclude from strata area)
 - F - Refridgerator
 - DB - Distribution Board
 - ST - Storage
 - * - Mirrored Unit

Area includes A/C ledge, balconies, private enclosed space and void (where applicable). Areas are estimated only and are subject to final survey. Plans are not to scale and subject to changes as may be required by the relevant authorities. The balconies shall not be enclosed unless with approved screen. For an illustration of the approved screen, please refer to the annex of balcony screen side letter.

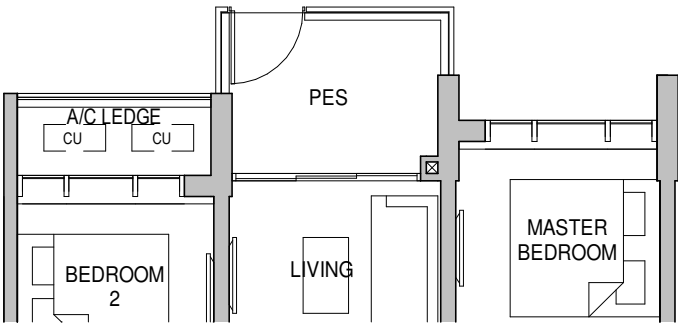
3-BEDROOM DELUXE

TYPE C2-P

1044 sqft / 97 sqm

Tower 26
03-02

Tower 28
03-21*

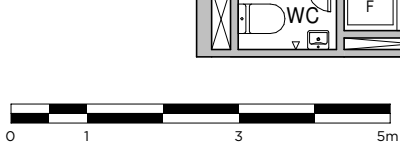
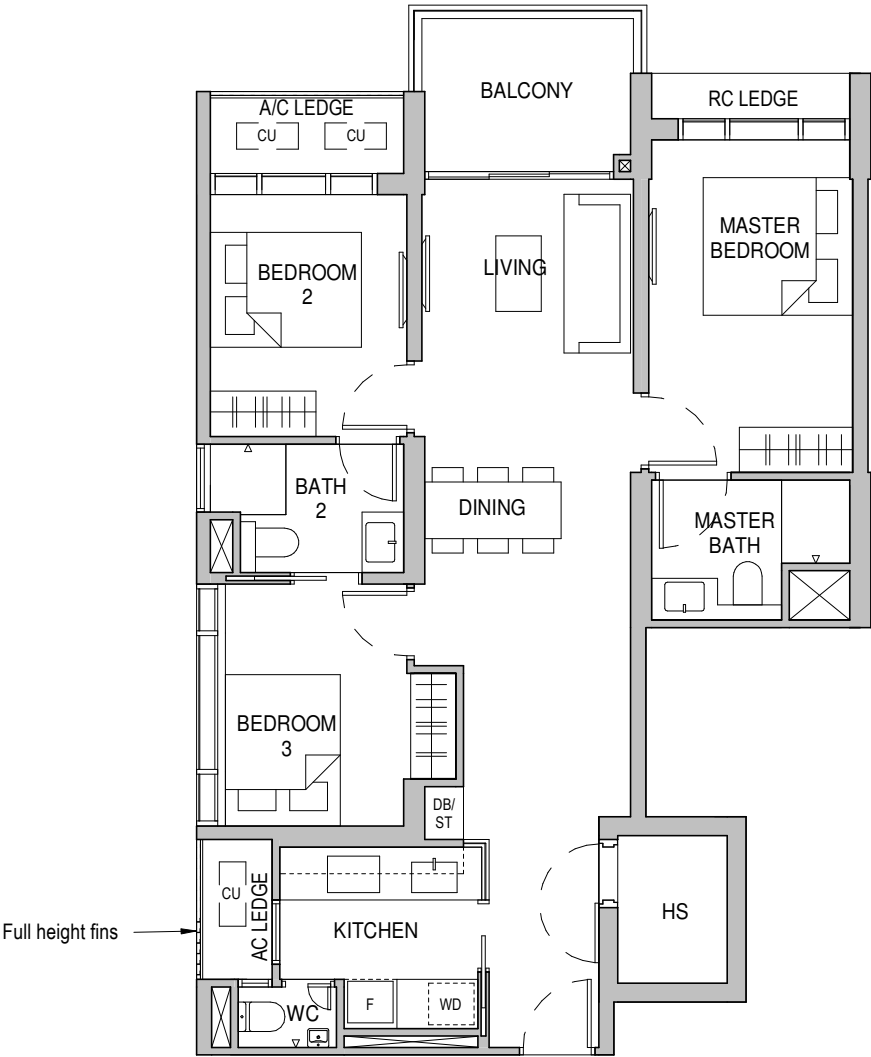


TYPE C2

1044 sqft / 97 sqm

Tower 26
04-02 to 14-02

Tower 28
04-21* to 13-21*



- LEGEND**
- AC LEDGE - Air Conditioner Ledge
 - CU - Condensing Unit
 - HS - Household Shelter
 - WD - Washer cum Dryer
 - RC LEDGE - Reinforced concrete ledge (excluded from strata area)
 - Service Void Areas (exclude from strata area)
 - F - Refridgerator
 - DB - Distribution Board
 - ST - Storage
 - * - Mirrored Unit

Area includes A/C ledge, balconies, private enclosed space and void (where applicable). Areas are estimated only and are subject to final survey. Plans are not to scale and subject to changes as may be required by the relevant authorities. The balconies shall not be enclosed unless with approved screen. For an illustration of the approved screen, please refer to the annex of balcony screen side letter.



A MULTI-FACETED SETUP FOR A MULTI- GENERATIONAL FAMILY

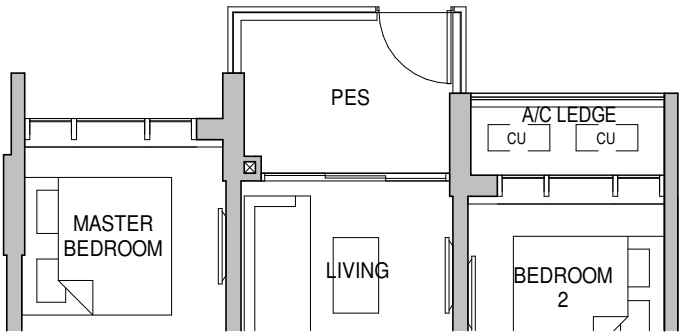


3-BEDROOM GRANDE

TYPE C3-P 1119 sqft / 104 sqm

Tower 26
03-01

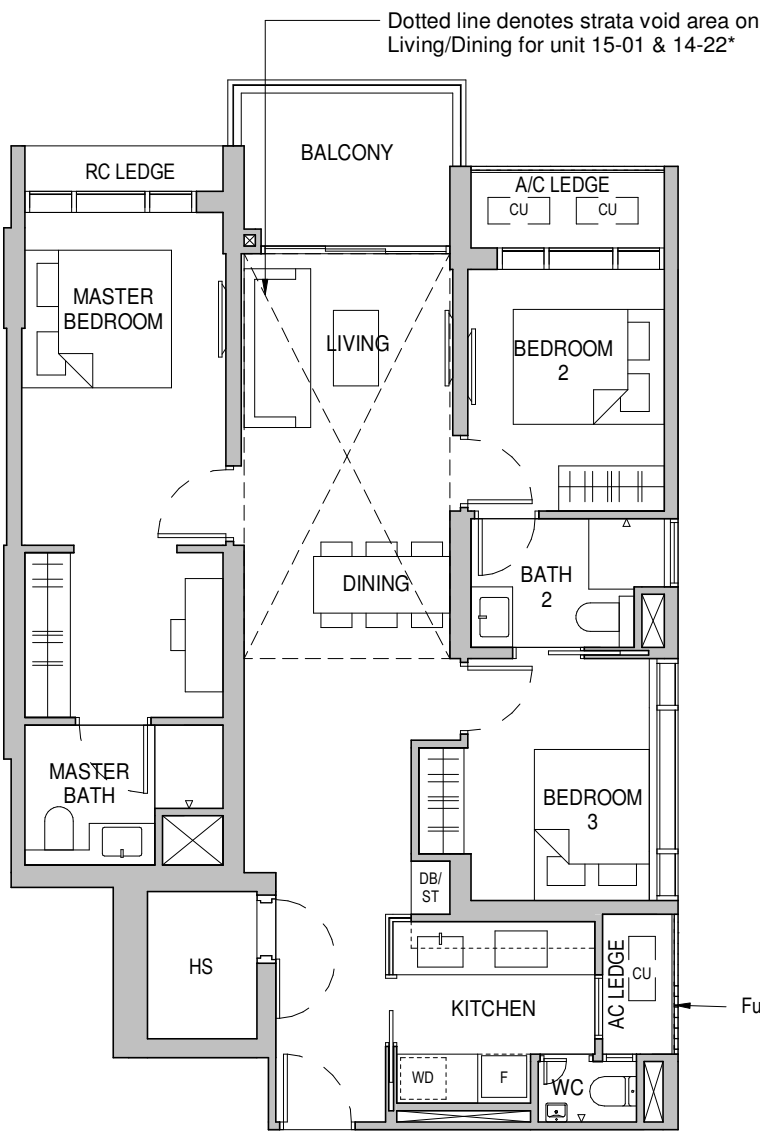
Tower 28
03-22*



TYPE C3 1119 sqft / 104 sqm

Tower 26
04-01 to 14-01

Tower 28
04-22* to 13-22*



TYPE C3-E 1292 sqft / 120 sqm (inclusive of 16 sqm High Ceiling)

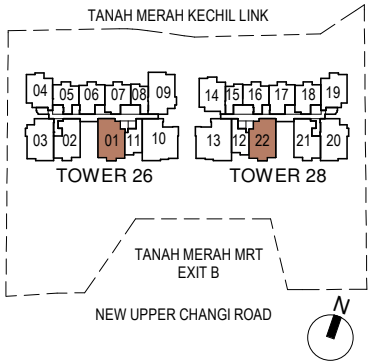
Tower 26
15-01

Tower 28
14-22*



- LEGEND**
- AC LEDGE - Air Conditioner Ledge
 - CU - Condensing Unit
 - HS - Household Shelter
 - WD - Washer cum Dryer
 - RC LEDGE - Reinforced concrete ledge (excluded from strata area)
 - Service Void Areas (excluded from strata area)
 - F - Refrigerator
 - DB - Distribution Board
 - ST - Storage
 - * - Mirrored Unit

Area includes A/C ledge, balconies, private enclosed space and void (where applicable). Areas are estimated only and are subject to final survey. Plans are not to scale and subject to changes as may be required by the relevant authorities. The balconies shall not be enclosed unless with approved screen. For an illustration of the approved screen, please refer to the annex of balcony screen side letter.



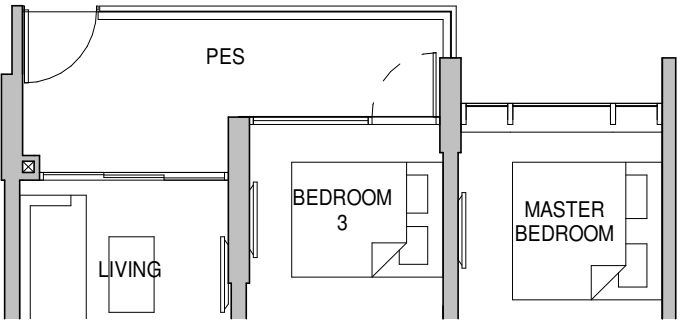
3-BEDROOM PREMIUM

TYPE C4-P

1163 sqft / 108 sqm

Tower 26
03-03

Tower 28
03-20*

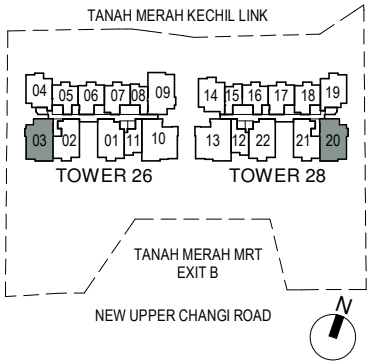


TYPE C4

1163 sqft / 108 sqm

Tower 26
04-03 to 14-03

Tower 28
04-20* to 13-20*



- LEGEND**
- | | |
|--|-------------------------|
| AC LEDGE - Air Conditioner Ledge | F - Refridgerator |
| CU - Condensing Unit | DB - Distribution Board |
| HS - Household Shelter | ST - Storage |
| WD - Washer cum Dryer | * - Mirrored Unit |
| RC LEDGE - Reinforced concrete ledge (excluded from strata area) | |
| Service Void Areas (exclude from strata area) | |

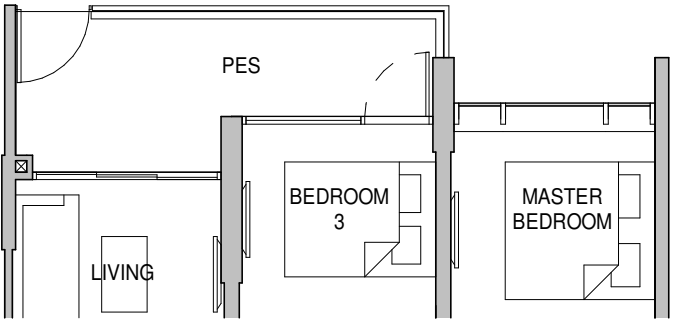
Area includes A/C ledge, balconies, private enclosed space and void (where applicable). Areas are estimated only and are subject to final survey. Plans are not to scale and subject to changes as may be required by the relevant authorities. The balconies shall not be enclosed unless with approved screen. For an illustration of the approved screen, please refer to the annex of balcony screen side letter.

3-BEDROOM PREMIUM

TYPE C4A-P

1163 sqft / 108 sqm

Tower 26
03-09



TYPE C4A

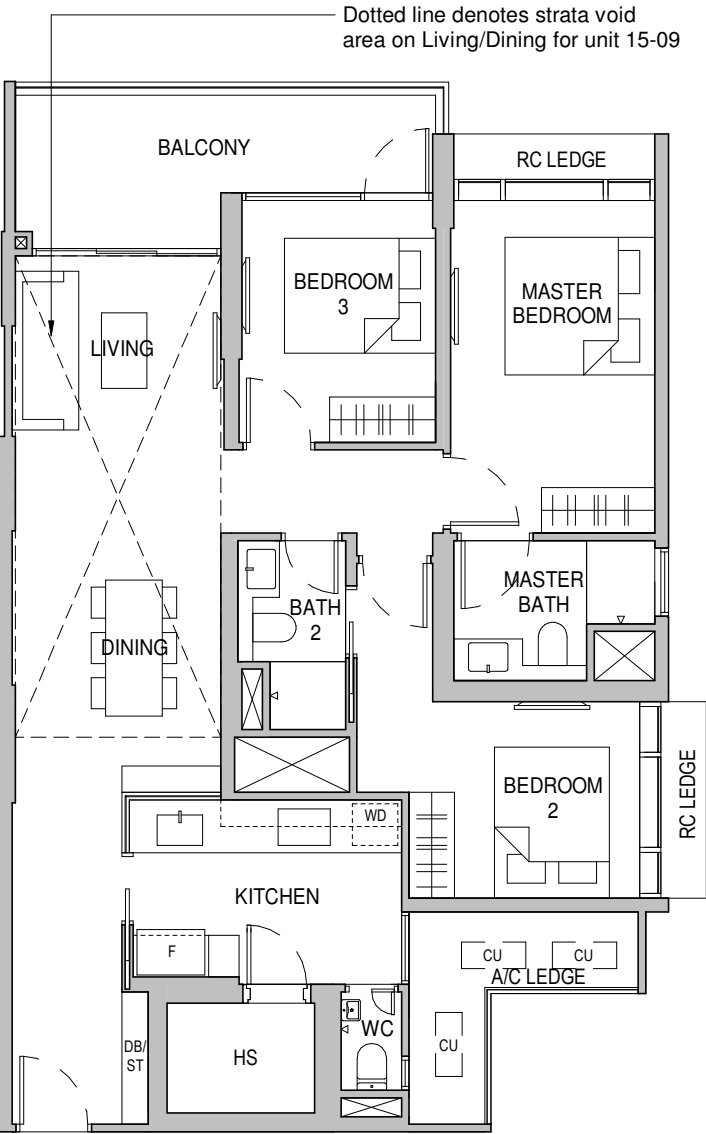
1163 sqft / 108 sqm

Tower 26
04-09 to 14-09

TYPE C4A-E

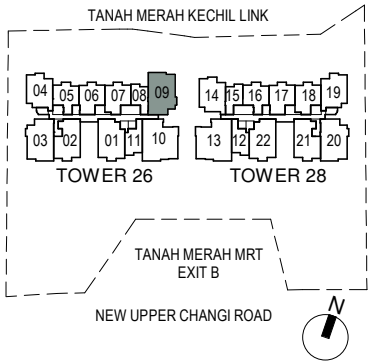
1367 sqft / 127 sqm
(inclusive of 19 sqm Strata void area)

Tower 26
15-09



- LEGEND**
- | | |
|--|-------------------------|
| AC LEDGE - Air Conditioner Ledge | F - Refridgerator |
| CU - Condensing Unit | DB - Distribution Board |
| HS - Household Shelter | ST - Storage |
| WD - Washer cum Dryer | * - Mirrored Unit |
| RC LEDGE - Reinforced concrete ledge (excluded from strata area) | |
| Service Void Areas (exclude from strata area) | |

Area includes A/C ledge, balconies, private enclosed space and void (where applicable). Areas are estimated only and are subject to final survey. Plans are not to scale and subject to changes as may be required by the relevant authorities. The balconies shall not be enclosed unless with approved screen. For an illustration of the approved screen, please refer to the annex of balcony screen side letter.

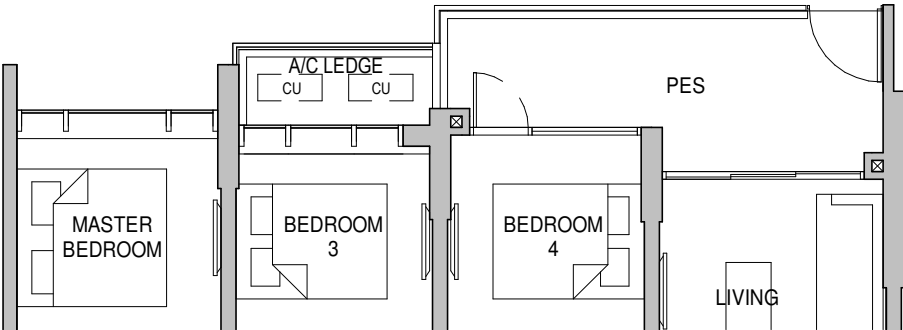


4-BEDROOM LUXURY

TYPE D1-P 1518 sqft / 141 sqm

Tower 26
03-10

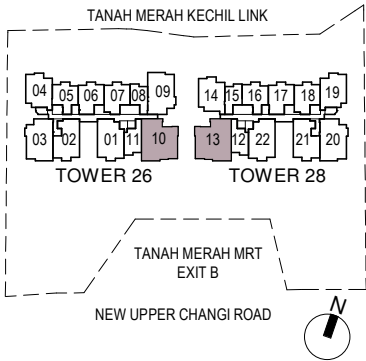
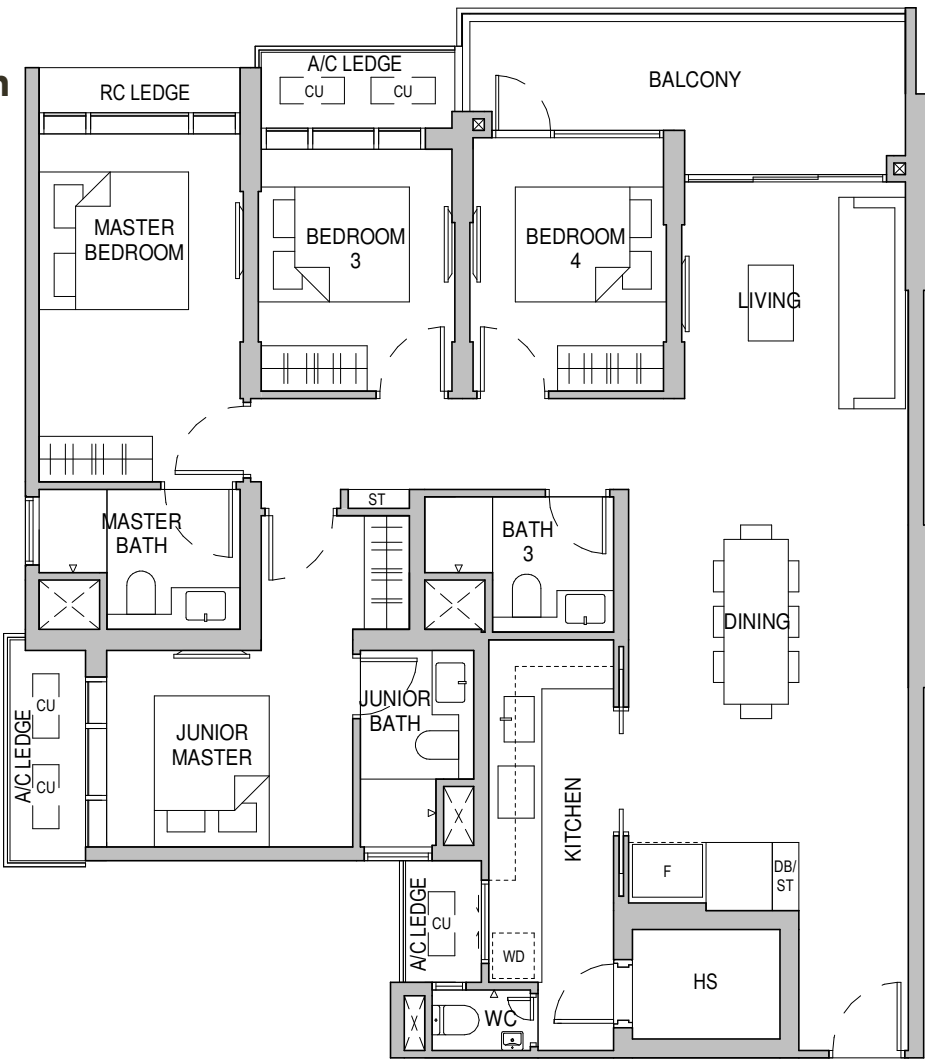
Tower 28
03-13*



TYPE D1 1518 sqft / 141 sqm

Tower 26
04-10 to 14-10

Tower 28
04-13* to 13-13*



- LEGEND**
- AC LEDGE - Air Conditioner Ledge
 - CU - Condensing Unit
 - HS - Household Shelter
 - WD - Washer cum Dryer
 - RC LEDGE - Reinforced concrete ledge (excluded from strata area)
 - Service Void Areas (exclude from strata area)
 - F - Refridgerator
 - DB - Distribution Board
 - ST - Storage
 - * - Mirrored Unit

Area includes A/C ledge, balconies, private enclosed space and void (where applicable). Areas are estimated only and are subject to final survey. Plans are not to scale and subject to changes as may be required by the relevant authorities. The balconies shall not be enclosed unless with approved screen. For an illustration of the approved screen, please refer to the annex of balcony screen side letter.

AN EXTRAORDINARY SPACE THAT DEFINES YOUR EXQUISITE TASTE



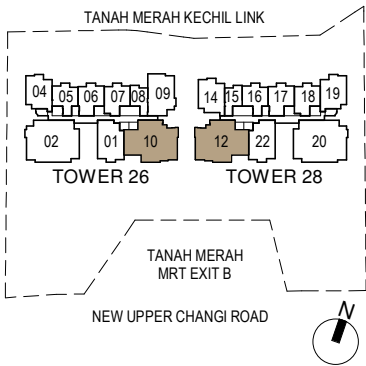
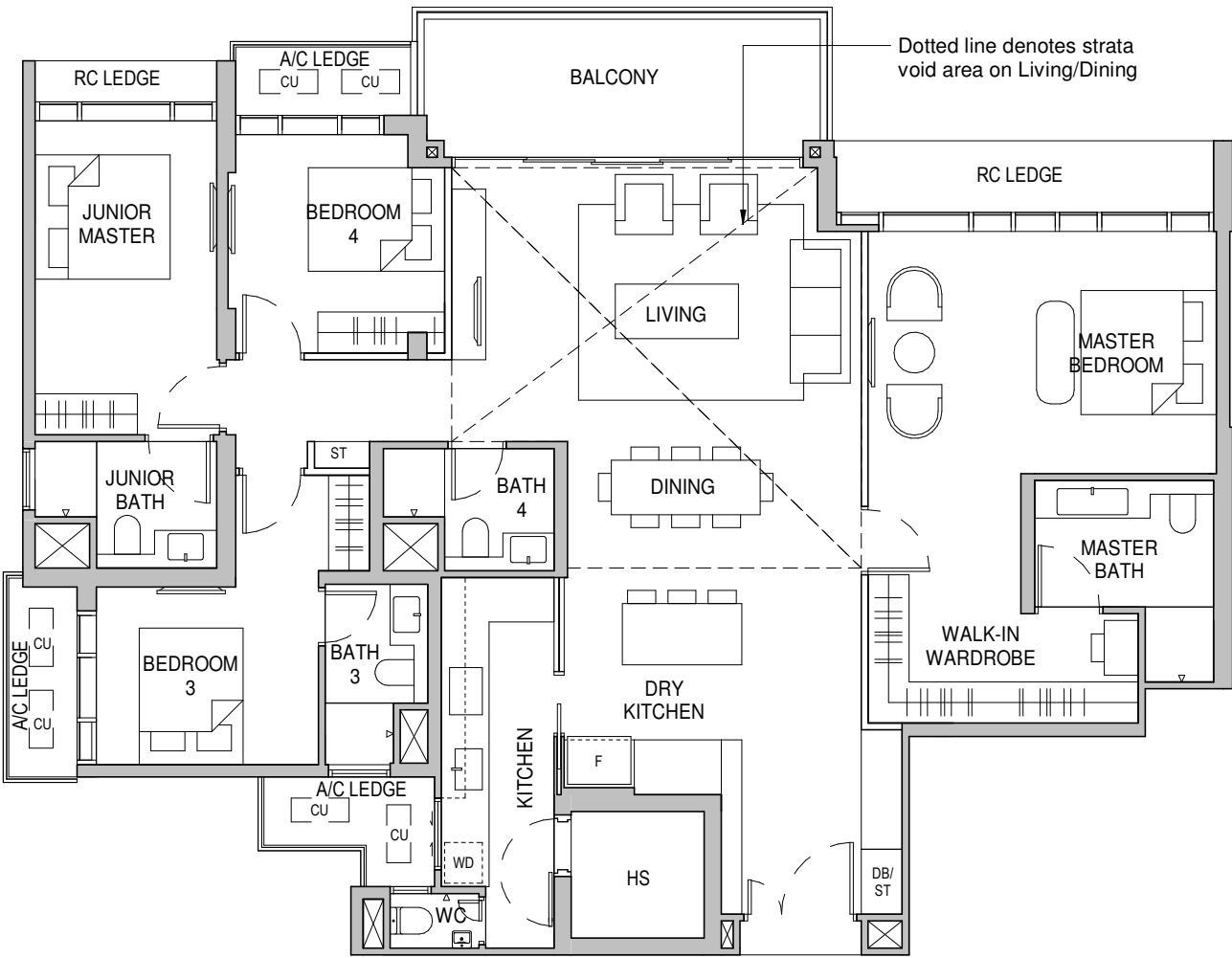
4-BEDROOM PENTHOUSE

TYPE PH1

2400 sqft / 223 sqm
(inclusive of 34 sqm Strata void area)

Tower 26
15-10

Tower 28
14-12*



- LEGEND**
- AC LEDGE - Air Conditioner Ledge
 - CU - Condensing Unit
 - HS - Household Shelter
 - WD - Washer cum Dryer
 - RC LEDGE - Reinforced concrete ledge (excluded from strata area)
 - Service Void Areas (exclude from strata area)
 - F - Refridgerator
 - DB - Distribution Board
 - ST - Storage
 - * - Mirrored Unit

Area includes A/C ledge, balconies, private enclosed space and void (where applicable). Areas are estimated only and are subject to final survey. Plans are not to scale and subject to changes as may be required by the relevant authorities. The balconies shall not be enclosed unless with approved screen. For an illustration of the approved screen, please refer to the annex of balcony screen side letter.

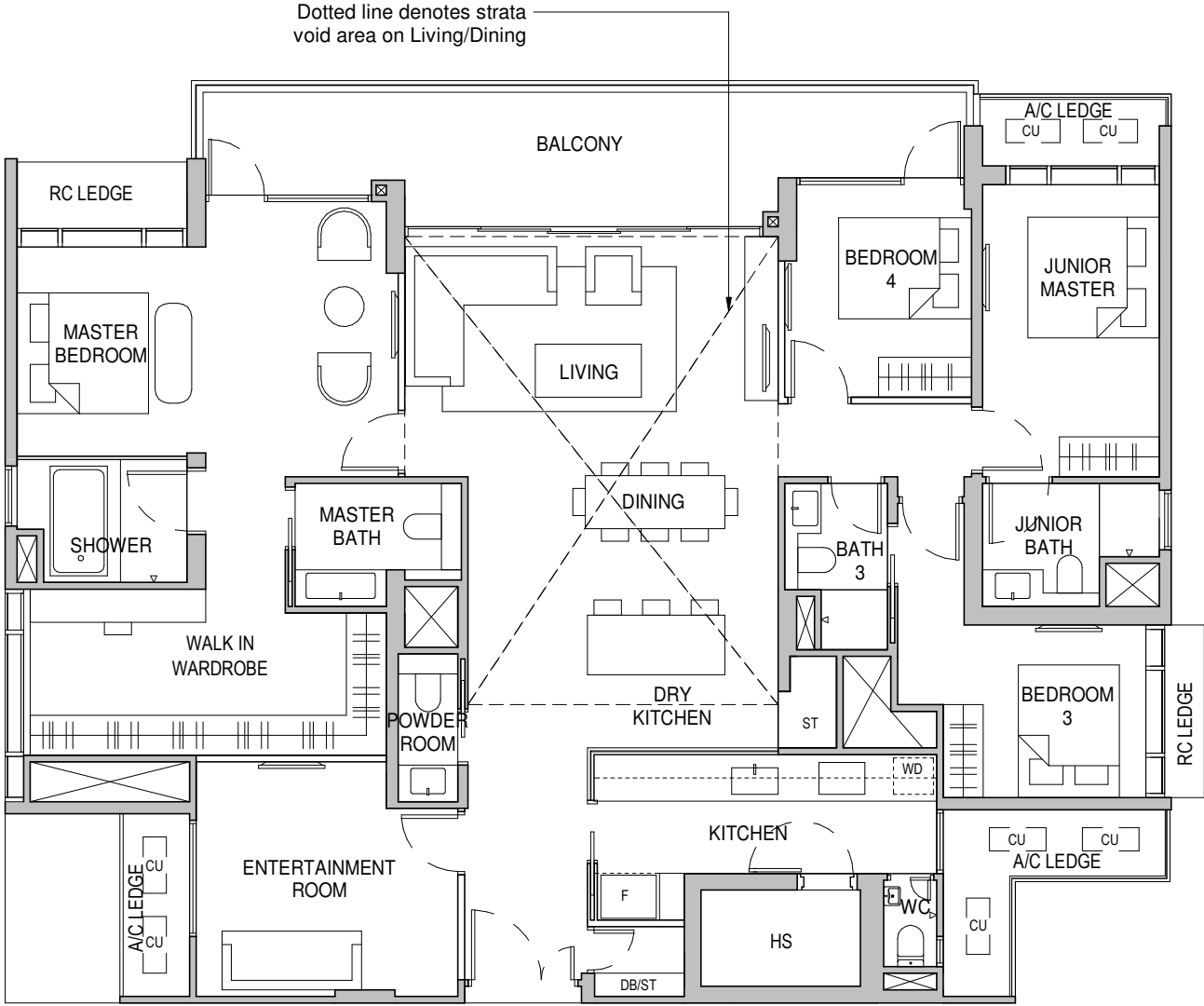
4-BEDROOM PENTHOUSE

TYPE PH2

2756 sqft / 256 sqm
(inclusive of 39 sqm Strata void area)

Tower 26
15-02

Tower 28
14-20*



- LEGEND**
- AC LEDGE - Air Conditioner Ledge
 - CU - Condensing Unit
 - HS - Household Shelter
 - WD - Washer cum Dryer
 - RC LEDGE - Reinforced concrete ledge (excluded from strata area)
 - Service Void Areas (exclude from strata area)
 - F - Refridgerator
 - DB - Distribution Board
 - ST - Storage
 - * - Mirrored Unit

Area includes A/C ledge, balconies, private enclosed space and void (where applicable). Areas are estimated only and are subject to final survey. Plans are not to scale and subject to changes as may be required by the relevant authorities. The balconies shall not be enclosed unless with approved screen. For an illustration of the approved screen, please refer to the annex of balcony screen side letter.

ABOUT MCC SINGAPORE

MCC Singapore is a subsidiary of Metallurgy Corporation of China Ltd, a Fortune Global 500 company listed in Hong Kong and Shanghai. With a focus on urban development and management, property development, project management as well as construction, MCC Singapore has been actively involved in transforming the Singapore cityscape through various notable projects such as Universal Studios Singapore, Resorts World Sentosa, Keppel Distripark and Singapore Expo. In addition, MCC Singapore has also developed and/or project managed several executive condominiums and private condominiums. They include The Alps Residences, Queens Peak, The Canopy, The Nautical, Canberra Residences, One Canberra, Forestville, The Poiz Residences and The Poiz Centre, Provence Residence as well as One Bernam.



Developer: MCC LAND (TMK) PTE. LTD. • License No.: C1432 • Location: Lot No. 11220N of Mukim 27, Singapore • Tenure: 99 years commencing on 10 February 2021 • Encumbrances on the Land: Caveat IG/530373U in favour of Bank of China Limited • BP No.: A1839-00014-2020-BP01 dated 18 February 2022 and A1839-00014-2020-BP02 dated 12 August 2022 • Expected Vacant Possession Date: 31 May 2027 • Expected Legal Completion Date: 31 May 2030

Whilst every reasonable care has been taken in preparing this brochure, the developer and its agents cannot be held responsible for any inaccuracies. All statements are believed to be correct but are not to be regarded as statements or representations of fact.

All information and specifications are current at the time of going to press and are subject to change as may be required and cannot form part of the contract. All plans are subject to any amendments approved or may be approved by the relevant authority. Visual representations including (architectural) models, drawings, photographs / pictures and artists' renderings are impression only, while illustrations of interiors are only decor suggestions and none to be regarded as representation facts. Floor areas are approximate measurements and subject to final survey.



JOINTLY DEVELOPED BY

